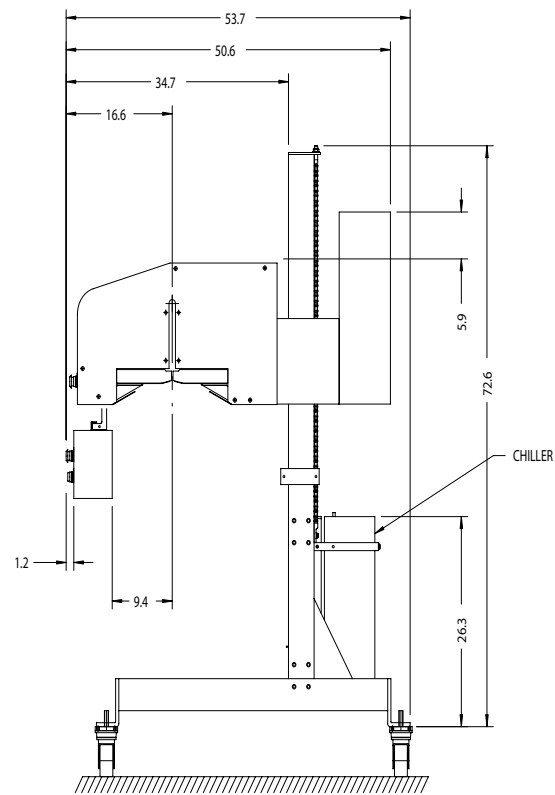
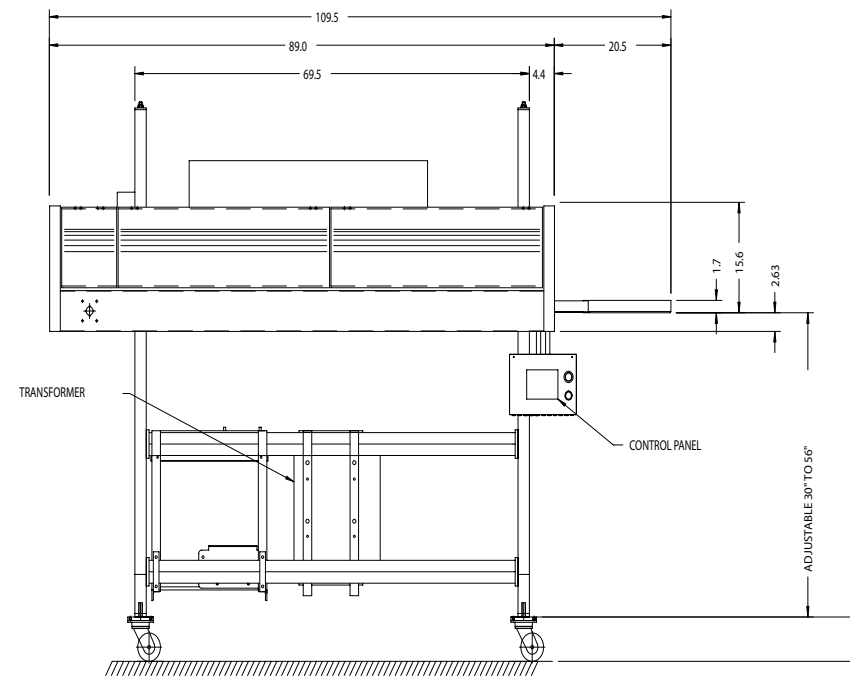


S-CH-S Mechanical Dimensions

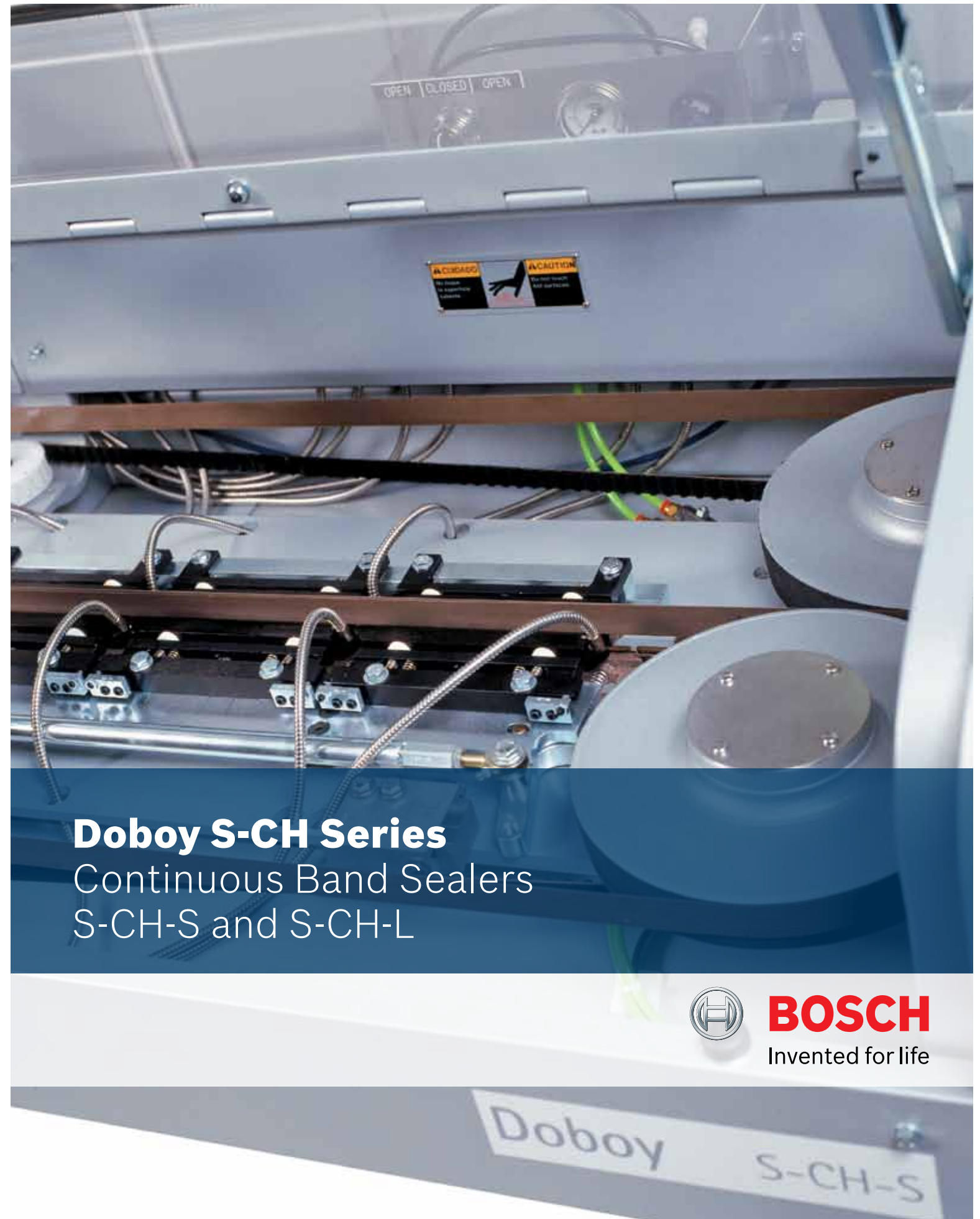
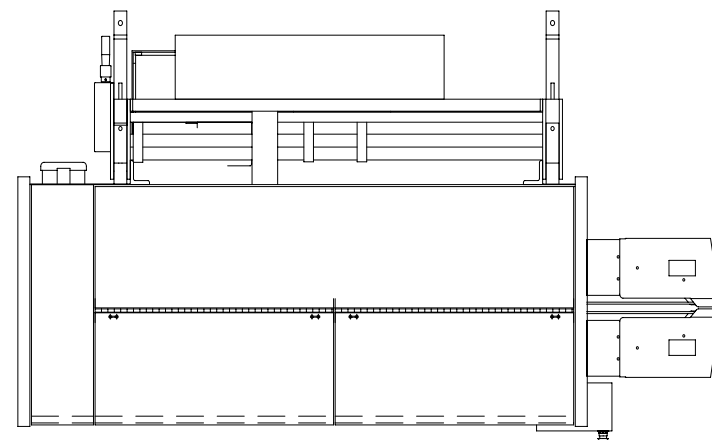
Side View



Front View



Arial View



Doboy S-CH Series

Continuous Band Sealers
S-CH-S and S-CH-L

Bosch Packaging Technology, Inc.

869 South Knowles Avenue
New Richmond, WI 54017 USA
Phone (715) 246-6511
Fax (715) 246-6539
sales.packaging-nrd@bosch.com
www.boschpackaging.com

Printed in U.S.A.



BOSCH
Invented for life

S-CH-S and S-CH-L

Quality. Performance. Rugged Dependability.

Designed for Hard Use

The S-CH series Sealers are designed to seal bags containing bulk products at speeds of up to 100 FPM. Gauges up to 8 mil. gusseted can be used. Applications include fertilizer, resins, titanium dioxide, garden products, agricultural chemicals, pet foods and many others. The S-CH has been constructed to provide many years of efficient production in even the toughest environments.

Outstanding Features

Single Point Gap Adjustment

Heating and cooling bars are mounted to a special indexing plate with a numerical reference block, eliminating the need to adjust individual bars, which saves set up time and assures accurate settings.

Bag Top Control

Full-length, 1" wide neoprene timing belts grip the bag securely to provide positive bag top control. The timing belt eliminates maintenance and wear.

Glass Teflon Sealing Bands

Provides better seals on gusseted bags and dramatically reduces machine maintenance and heating and cooling bar wear.

AC Frequency Variable Speed Drive

Machine speed can be adjusted from a control panel. No belts or pulleys to adjust. Can be incorporated with other line components to provide synchronized speed.

Main Frame

Main frame components are designed for dependable operation even in the most adverse conditions with extensive use of castings and cold rolled plate steel. The floorstand is constructed of welded tubular steel construction with hand crank vertical height adjustment. All guards are sheet metal or Lexan and are interlocked for safety.

Heating and Cooling Bars

The S-CH-S has heating and cooling bars (2 pair of each), while the S-CH-L has 7 pair of heating and 4 pair of cooling bars. All bars have a hardened surface treatment that dramatically reduces wear and an exclusive over-travel limit to reduce sealing band wear. Water cooling is standard.

Quick Change Band Replacement

The S-CH Series allows rapid band changes with no tools required, replacing in under four minutes. Bands are self-tracking and self-aligning.

Touch Pad Operator Control Panel

All machine settings can be performed from an easy to operate numeric key pad. A PLC controls most machine functions and can be easily integrated with upstream or downstream equipment.

Meeting Industry Needs

The S-CH Series is available in wide range of voltages, area classifications and options.

Options

- ▶ Bag top trimmer features a single, high speed cutter blade and positive scrap discharge
- ▶ Tape over feature used for dusty hard to seal product
- ▶ High product detector
- ▶ Band break detector
- ▶ Self contained water recirculation system
- ▶ Fully integrated electronic package that can be supplied for integration with a bagger and scale



Specifications S-CH-S

Machine Size

Length	109.5" (2780mm)
Length with trimmer	134.5" (3416mm)
Width	53.7" (1365mm)
Height	72.6" (1845mm)

Power

NEMA 12, 230/60/3
14 amps, 6250 Watts

Machine Speed

Up to 100' / min.
(Dependant upon film gauge)

Products

Heat sealable films up to 8 mil. gusseted / coated woven poly propylene Teflon impregnated fiberglass

Sealing Band

Heating Bars

Cooling Bars

Main Drive

Controls

AC frequency variable speed PLC based Touch Pad operator interface panel

S-CH-L

Machine Size

Length	154.5" (3924.3mm)
Length with trimmer	179.5" (4559.3mm)
Width	53.7" (1365mm)
Height	72.6" (1845mm)

Power

NEMA 12, 230/60/3
28.4 amps, 6250 Watts

Machine Speed

Up to 100' / min.
(Dependant upon film gauge)

Products

Heat sealable films up to 8 mil. gusseted / coated woven poly propylene

Sealing Band

Heating Bars

Cooling Bars

Main Drive

Controls

Teflon impregnated fiberglass 7 pair (total of 50")
4 pair (water cooled)
AC frequency variable speed PLC based Touch Pad operator interface panel

S-CH-S cooling bars (left)

S-CH-S control panel (right)



Specifications subject to change without notice