

Doboy TSC-030 Tri-Seal Carton Closer.

ECONOMIC CARTON SEALING SOLUTION IN A COMPACT FOOTPRINT.

SIMPLE AND OPEN DESIGN

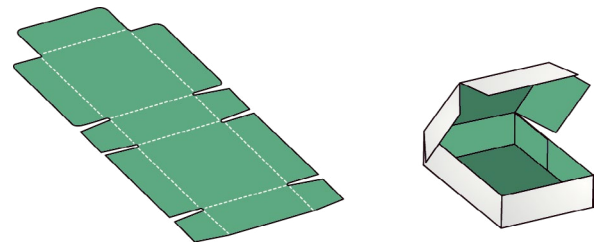
The TSC-030 tri-seal closer features an open frame design to allow easy cleaning, maintenance, and adjustment access. The welded steel frame and clear upper guarding provides 360 degree observation. The overall machine size provides a sealing solution in a compact footprint.

UNIQUE CARTON HANDLING

Handles cartons with a major flap front and side seal closure. Cartons are accepted at random through the carton inflow where they are automatically timed into the gluing section. Glue is applied by the Nordon glue applicator. The carton indexing unit pushes the carton at a 90 degree angle into the pump-up compression section which folds the lid down and seals front and side flaps, providing superior seal integrity.

FLEXIBLE, RELIABLE OPERATION

The TSC-030 comes standard with Rockwell controls and 16 preset recipes which are simple to program. Its efficient and accurate drive and control and its ability to change carton sizes in 10 minutes allows the user flexibility and reliability in their packaging operations.



Your benefits

- ❑ **Economically priced:** A simplified design for secondary packaging at an economical price in a compact footprint
- ❑ **Superior seal integrity:** The unique carton closing sequence of the closer provides seal integrity like no other
- ❑ **Single source supplier:** Simplify projects and eliminate integration risk by sourcing case packing and primary packaging from a single supplier



Packaging Line Structure.

Product Handling			Primary Packaging			Secondary Packaging		
Pick & Place	Distribution	Feeding	Flow Wrapping	Vertical Bagging	Bag Sealing	Forming	Closing	Loading

TSC-030

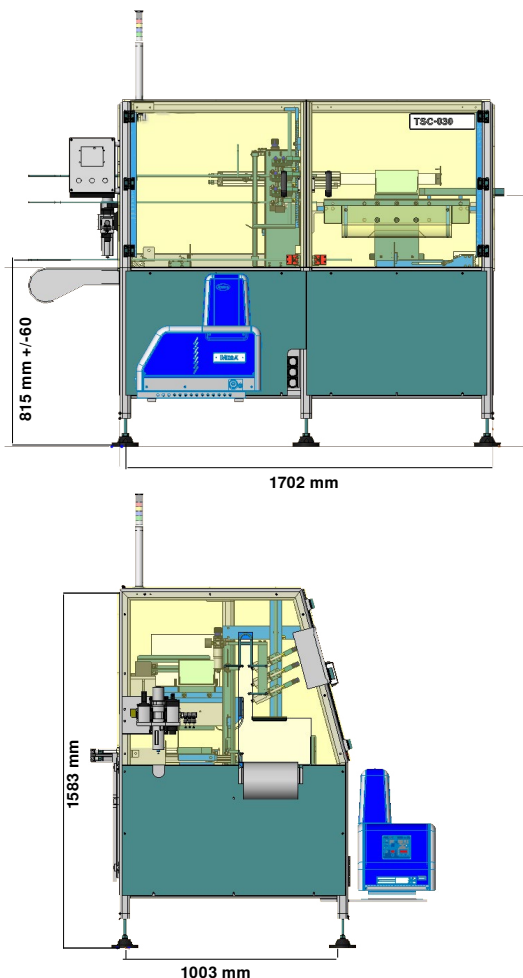
Standard features

- ❑ Pneumatically operated motions
- ❑ Pump-up style vertical compression
- ❑ Tubular steel frame
- ❑ Safety interlocks
- ❑ Nordon Adhesive system
- ❑ Rockwell controls and drives
- ❑ Right and left hand models available

Optional features

- ❑ Special power requirements
- ❑ Non-attendant
- ❑ Spare parts
- ❑ Extended leg kit
- ❑ Adhesive system options
- ❑ Remote glue stand
- ❑ Casters

Footprint



Technical Specifications

Formed Carton Size Range	min.	max.
Length	115mm 4.5"	406mm 16"
Width	75mm 3"	254mm 10"
Height	19mm 0.75"	171mm 6.75"
Mechanical Dimensions		
Length	2173mm 85.5"	
Input Height	815mm +/- 54mm 32.4" +/- 0.2"	
Exit Height	1150mm 45.6"	
Capacity	max.	
Output	30 cartons/min.	
Electrical		
Standard supply (VAC)	230V	
Power supply frequency (Hz)	60HZ	
Control circuit (VDC)	3PH	
Pneumatics		
Bar / PSI	min. 6 bar 90 PSI	



How will you load your cartons?

Learn how you can automate your carton loading with our modular, user-friendly robots.

Average payback in 12 - 18 months!

Syntegon Packaging Technology, LLC.

869 South Knowles Avenue

New Richmond, WI 54017 USA

Phone +1 715 246 6511

Fax +1 715 246 6539

Mail sales.packaging-nrd@syntegon.com

Web www.syntegon.com/products/doboy-tsc-030

Subject TSC-030

Date 06.2020

Department PAUD/MKT