



**A-B-C PACKAGING
MACHINE CORPORATION**



DECASING



Model 49 Decaser

Here's a compact machine designed for high speed unloading of reshipper cases to assure a continuous supply of empty bottles to your production line.

- Eliminate manual case unloading
- Gentle container handling
- Positive empty case transport

Workhorse unloader and single filer



High speed, in-line operation

The Model 49 eliminates the repetitive tasks associated with manual decasing, eliminating the risk of employee injury or disability.

Cases feed back-to-back through a vertical belt infeed which provides gentle case handling. Major flaps are plowed open and the minor flaps are opened by the bottle weight as the case is lifted. The bottles discharge onto the impact absorbing belt.

- Ensure container integrity
- Eliminate labor and liability
- Run many styles with quick changeover

Quality features make a better machine:

- Steel frame construction
- Allen-Bradley PLC monitors line and controls operation
- Vertical belt infeed for gentle case handling
- Quick changeover with rapid adjust hand cranks for new case sizes
- Variable speed drive to meet production needs
- Locking side bar adjustments
- Optional repeatable position indicators



Gentle container handling

As the bottles discharge, they remain spaced and separated in their pack pattern until they reach single filing.

The single filing section is designed to separate the bottles with minimum bottle-to-bottle contact. This reduces the risk of breakage when running glass, and the risk of downed bottles when running plastic containers.

Specifications:

Case range: RSC, HSC or RSC-Tablock cases

Case size:	L	W	H
Minimum	9"	8"	5"
Maximum	26"	15"	15"

Electrical: Primary 220, 440v, 60hz, 3ph

Machine dimensions: 19' 10" L x 5' 2" W x 6' 2" H

Weight: 3,590 lbs.

4,020 lbs. w/180° case turnover

Speed: Up to 70 cases / minute



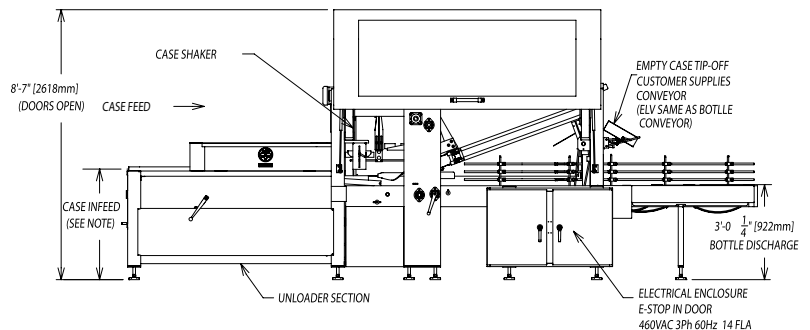
Line layout flexibility

The Model 49 has a compact design, providing maximum flexibility for line layouts. Right hand or left hand bottle discharge is available.

Empty cases are uprighted and discharged onto a floor level conveyor. The optional 180° case turnover cycles cases for ceiling height transport. (shown in photo at left)

Versatile for many container styles

The Model 49 automatically decases and single files glass or plastic bottles from RSC, HSC, or Tablock cases. Changeover is quick and easy...most case changes are completed with simple hand crank adjustments.



All information in this brochure was current at time of printing, however, in the continuing effort to improve the quality and construction of A-B-C equipment, we reserve the right to make changes without notice.



C-143-12/17



**A-B-C PACKAGING
MACHINE CORPORATION**



ERECTORS



PACKERS



SEALERS



PARTITIONERS



PALLETIZERS



DEPALLETIZERS



DECASERS

811 Live Oak Street, Tarpon Springs, FL 34689 • 727-937-5144 • Fax 727-938-1239 • www.abcpackaging.com