



**A-B-C PACKAGING
MACHINE CORPORATION**



PACKING



Model 19 for small cases
with powered takeaway conveyor

Labor Saver Case Packers

These case packers provide an economical upgrade from hand packing for a quick payback in labor savings.

- For rigid or semi-rigid cartons, single or multipacks
- Compact footprints and modular designs
- The ideal solution for economy, flexibility and reliability

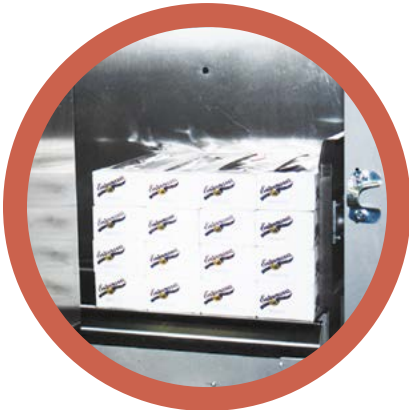
Economical and labor-saving case packers

VIEW VIDEO



Easy to operate

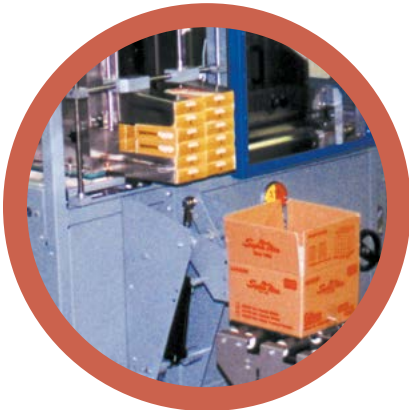
Product feed, accumulation and packing are automatic and monitored by sensors to match the packing sequence to your line speed. The operator simply opens a KD case and positions it on the packing funnel. After packing, the case is lowered to a powered or gravity takeaway conveyor.



Gentle product handling

Infeed conveyors and accumulation devices are designed for smooth and gentle product handling, offering precision and accuracy that is unmatched by hand packing.

Stainless steel is utilized in all areas where products contact the machine to promote a clean product environment and ensure smooth transfer of products with coated graphics or overwraps.



Increased production

Automatic accumulation and packing can increase production speeds to 15 cases per minute, depending on the dexterity of the operator. Other methods to enhance speeds include progressive accumulation and multi-lane feeding.

This packer may be interfaced directly to an A-B-C top and bottom taper or adhesive sealer with no additional conveyor required.



Adjustable for many products and cases

Whether you need to pack one style container, many different styles into one case or a variety of case sizes, these packers can suit your needs. Standard models pack rigid or semi-rigid containers, cartons or multipacks.

A variety of product repositioning devices are available for the most efficient accumulation and loading of each product size and style.



SP 29 for large cases with footpedal activation and gravity takeaway conveyor

Quality features make a better machine:

- Powered infeed conveyor
- Powered or gravity takeaway conveyor
- Product access door - for immediate access to accumulation chamber
- Clear, high visibility guards - electrically interlocked to stop the machine when opened
- No case, no load protection
- No product, no load protection
- Self lubricated air cylinders
- Sealed bearings throughout
- Automatic water eliminator keeps air lines dry
- Operator push buttons for load cycle and e-stop

All-mechanical models also available

- Optional adjustable funnel also available

Specifications:

Case range: RSC and HSC cases

Product range: rigid or semi-rigid containers, cartons, and multipacks

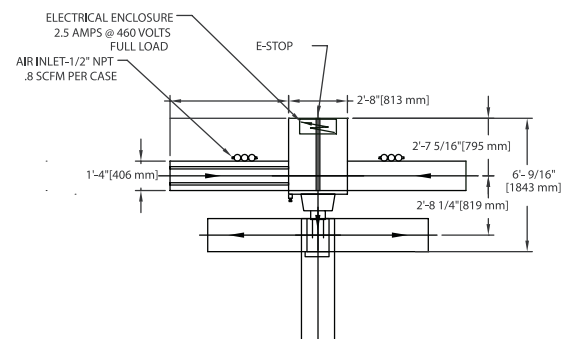
Electrical: 2.5amps @ 460V Full Load

Air: .8 SCFM per case at 60 psi

Mechanical: 1/2 hp motor

Speed: Up to 15 cases/minute

SP19 floor plan



All information in this brochure was current at time of printing, however, in the continuing effort to improve the quality and construction of A-B-C equipment, we reserve the right to make changes without notice.

C-135-12/17



**A-B-C PACKAGING
MACHINE CORPORATION**



ERECTORS



PACKERS



SEALERS



PARTITIONERS



PALLETIZERS



DEPALLETIZERS



DECASERS

811 Live Oak Street, Tarpon Springs, FL 34689 • 727-937-5144 • Fax 727-938-1239 • www.abcpackaging.com